



PRODUCT SPECIFICATIONS  
CW(X) CWE(X) CW-HW(X)  
Chilled Water Cooling with  
Hot Water or Electric Heat



Standard unit shown  
(Closet application - Front Return Air)



Unit shown with bottom return air kit  
(Closet application - Bottom Return Air)



Unit shown with louvered wall panel  
(Recessed wall application)

## CW SERIES-PSC MOTOR CWX SERIES-ECM MOTOR

**Vertical**  
**190-1190 CFM**

- HIGH EFFICIENCY
- HIGH PERFORMANCE

### **ECM Motor Options**

The ECM motor option includes 24V controls, a constant torque, permanent magnet, brushless DC motor, with 4 discrete speed taps that allow for high static applications and precise air balancing

### **PSC Motor Options**

3 speed 120V with 24V controls (240 on CWE)  
277V option available on PSC motor



First Company  
P.O. Box 270969  
Dallas, TX 75227  
Ph. (214)-388-5751  
[www.firstco.com](http://www.firstco.com)



**NEW! ECM Motor Option**

This new ECM motor option includes 24V controls, a constant torque, permanent magnet, brushless DC motor, with 4 discrete speed taps that allow for precise air balancing.

The CW(\*) is equipped with a control board that allows 24V 3-speed fan operation from a 3-speed wall mounted thermostat. Three compatible 3-speed thermostats are available from First Co.: manual changeover (#T420), auto changeover (#T421), and the all new "Autospeed 24V" (#T200 and #T201). The T200/T201 Autospeed 24V provides maximum comfort and efficiency by automatically varying the fan speed between High, Medium, and Low speeds, depending on room temperature and desired thermostat setting. (See P4. for additional information)

**Standard Features:**

- 240V motor, 24V 3-speed fan control
- **240/24V 3-speed control board** (see description on Page 4)
- **Electrical service pullout** (not on 277V models)
 

CWX	Thru-Door
120/24V	YES
208/230/24V	YES
277/24V	NO
CWEX	YES
208/230/24V	YES
CW-HWX	YES
- Factory installed electric heat
- Non-corrosive thermoplastic drain pan, sloped for positive drainage
- Separate compartment for drain connections (allows the use of PVC drain piping)
- Drain pan has female primary and secondary fittings
- Easily accessible 1" filter
- Various optional factory installed valve packages
- Coil connections stub out top of unit

**Optional Accessories:** (see Page 3)

Optional accessories include 3-Speed Wall Thermostats, Wall Panels with captive Screws (for recessed wall mounting), Condensate Overflow Switch, Closet Hanger Bracket Kit, Bottom Return Air Kit and various Chilled Water Valve Packages.

CW(\*) models with other motor voltages may be available. (Contact factory)

\*Factory use  
(X) Denotes with ECM motor



**CW(X) Series - 2-Pipe Upflow Wall/Closet**

The CW series is designed as an upflow indoor air handler with a chilled water coil for cooling. This 10" high space saving unit provides easy access for service and maintenance.



**CW-HW(X) Series - 4-Pipe Upflow Wall/Closet**

The CW-HW series is designed for as an upflow indoor air handler with a chilled water coil for cooling and hot water coil for heating.

**\* Accessible HW Connections**



**CWE(X) Series - 2-Pipe Upflow Wall/Closet**

The CWE series is designed for as an upflow indoor air handler with a chilled water coil for cooling and electric heat.



# CW Series

## Wall / Closet Fan Coils

# CW Series

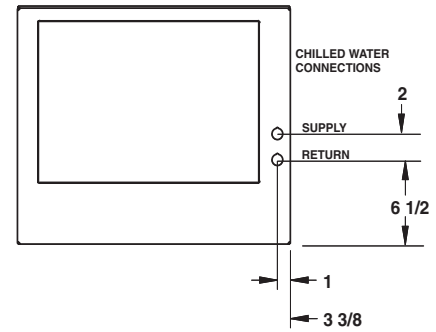
## Upflow Wall / Closet Fan Coils

### 2-Pipe Chilled Water - Hot Water

(240 - 1160 CFM)

COOLING CAPACITY																	
UNIT MODEL	NOMINAL CFM	45 DEGREE ENTERING WATER									42 DEGREE ENTERING WATER						
		GPM	P.D. (Ft. Wtr.)	80F D.B. / 67F W.B.			75F D.B. / 63F W.B.			GPM	GPM (Ft. Wtr.)	80F D.B. / 67F W.B.			75F D.B. / 63F W.B.		
				TH	SH	TR	TH	SH	TR			TH	SH	TR	TH	SH	TR
4CW	400	1.5	4.3	9.7	8.8	13.0	7.8	7.8	10.4	1.5	4.3	10.6	9.1	14.1	8.6	8.6	11.4
		2.5	10.5	12.0	9.6	9.6	9.2	8.5	7.4	2.5	10.5	13.1	10.0	10.5	10.0	8.8	8.0
		3.5	19.0	13.1	10.0	7.5	10.0	8.8	5.7	3.5	19.0	14.2	10.5	8.1	10.9	9.2	6.2
6CW	600	3.0	5.0	17.3	13.1	11.5	13.2	11.5	8.8	3.5	6.7	20.0	14.1	11.4	15.3	12.3	8.7
		4.0	8.6	19.2	13.8	9.6	14.7	12.1	7.3	4.5	10.7	21.7	14.8	9.6	16.6	12.8	7.4
		5.0	13.0	20.4	14.3	8.2	15.6	12.5	6.2	5.5	15.5	22.8	15.2	8.3	17.4	13.2	6.3
8CW	800	6.5	11.4	23.2	17.1	7.1	17.7	15.0	5.4	6.0	9.8	24.6	17.6	8.2	18.8	15.4	6.3
		7.5	14.8	24.2	17.4	6.5	18.5	15.3	4.9	7.0	13.1	25.8	18.1	7.4	19.7	15.8	5.6
		8.5	18.7	25.0	17.7	5.9	19.1	15.5	4.5	8.0	16.7	26.8	18.4	6.7	20.5	16.1	5.1
10CW	1000	6.5	5.7	29.0	21.6	8.9	22.2	19.0	6.8	6.0	4.6	30.7	22.2	10.2	23.5	19.4	7.8
		8.0	8.2	31.0	22.3	7.8	23.7	19.5	5.9	8.0	8.2	33.8	23.4	8.5	25.8	20.4	6.5
		9.5	11.0	32.5	22.9	6.8	24.8	20.0	5.2	10.0	12.1	35.8	24.1	7.2	27.3	20.9	5.5
12CW	1200	6.0	6.3	33.0	26.1	11.0	25.2	23.2	8.4	5.5	5.4	34.7	26.7	12.6	26.5	23.6	9.6
		7.5	9.5	36.1	27.3	9.6	27.6	24.0	7.4	7.0	8.4	38.3	28.1	10.9	29.3	24.6	8.4
		9.0	13.2	38.5	28.1	8.5	29.4	24.7	6.5	8.5	11.9	41.1	29.2	9.7	31.4	25.5	7.4

HEATING CAPACITY												
UNIT MODEL	NOMINAL CFM	GPM	P.D. (Ft. Wtr.)	HEATING DATA (70° ENTERING AIR)								
				180 F		160 F		140 F		120 F		
				BTUH	LVG AIR °F	BTUH	LVG AIR °F	BTUH	LVG AIR °F	BTUH	LVG AIR °F	
4CW	400	1.0	2.1	26.0	130	21.3	119	16.6	108	11.8	97	
		2.0	7.1	30.2	140	24.7	127	19.2	114	13.7	102	
		3.0	14.5	31.8	144	26.1	130	20.3	117	14.5	104	
6CW	600	1.0	0.7	35.7	125	29.2	115	22.7	105	16.2	95	
		2.0	2.4	44.7	139	36.5	126	28.4	114	20.3	101	
		3.0	5.0	48.4	145	39.6	131	30.8	118	22.0	104	
8CW	800	3.5	3.6	56.8	136	46.5	124	36.1	112	25.8	100	
		5.0	7.0	60.2	140	49.3	127	38.3	114	27.4	102	
		6.5	11.4	62.6	142	51.2	129	39.8	116	28.5	103	
10CW	1000	4.0	2.4	73.0	138	59.7	125	46.4	113	33.2	101	
		6.0	4.9	78.2	142	64.0	129	49.8	116	35.6	103	
		8.0	8.2	81.5	145	66.7	132	51.9	118	37.1	104	
12CW	1200	3.0	1.8	81.5	133	66.7	121	51.9	110	37.0	99	
		4.5	3.7	92.8	142	75.9	129	59.1	116	42.2	103	
		6.0	6.3	97.1	145	79.4	131	61.8	118	44.1	104	



**NOTES:**

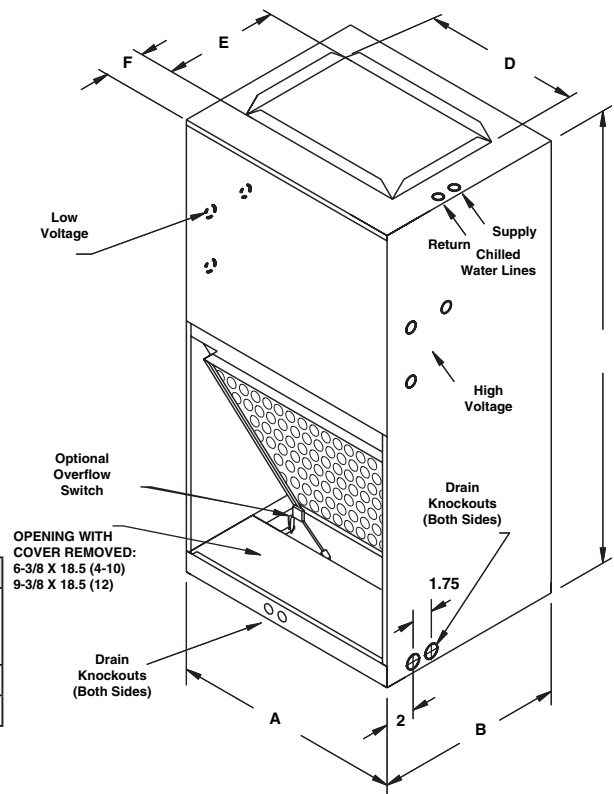
1. Above capacities are at nominal CFM conditions. Maximum discharge air temperature must not exceed 145° at actual CFM.

BLOWER DATA - PSC											
UNIT MODEL	MOTOR H.P. (120V)	AMPS	MOTOR SPEED	CFM VS. EXTERNAL STATIC PRESSURE							
				0.05	0.10	0.15	0.20	0.25	0.30	0.35	0.40
4CW	1/6	2.1	MED. HIGH	520	500	485	470	450	430	415	---
			MED. LOW	380	370	360	350	340	330	310	---
			LOW	300	290	280	270	260	250	240	---
6CW	1/6	2.1	HIGH	620	615	610	600	585	570	555	---
			MED. HIGH	410	400	390	380	370	360	350	---
			MED. LOW	300	290	280	270	260	250	240	---
8CW	1/6	3.2	HIGH	855	840	820	800	775	750	730	710
			MEDIUM	710	700	685	670	655	640	625	610
			LOW	580	570	560	550	540	530	515	500
10CW	1/4	4.6	HIGH	1075	1050	1025	1000	980	960	930	900
			MEDIUM	875	860	845	830	815	800	780	760
			LOW	705	700	690	680	670	660	645	630
12CW	1/4	3.8	HIGH	-	1160	1130	1100	1070	1040	1010	980
			MED-HIGH	-	1070	1045	1020	995	970	940	910
			MED-LOW	-	1000	975	950	930	910	885	860

PHYSICAL DIMENSIONS								
UNIT MODEL	A	B	C	D	E	F	FILTER SIZE	CHILLED WATER COIL CONNECTIONS
4 - 10CW	22-1/8	15-1/8	40	13	10-1/2	3-5/8	18 X 18	5/8 O.D.
12CW	22-1/8	18-1/8	43	14	13	3-5/8	18 X 24	5/8 O.D.

**NOTES:**

1. Coil connections are sweat and stub out top of unit



# CW-HW Series

## Wall / Closet Fan Coils

# CW-HW Series

## Upflow Wall / Closet Fan Coils

### 4-Pipe Chilled Water - Hot Water

(190 - 1190 CFM)

COOLING CAPACITY																	
UNIT MODEL	NOMINAL CFM	45 DEGREE ENTERING WATER									42 DEGREE ENTERING WATER						
		GPM	P.D. (Ft. Wtr.)	80F D.B. / 67F W.B.			75F D.B. / 63F W.B.			GPM	GPM (Ft. Wtr.)	80F D.B. / 67F W.B.			75F D.B. / 63F W.B.		
				TH	SH	TR	TH	SH	TR			TH	SH	TR	TH	SH	TR
4CW-HW	400	1.5	4.3	9.7	8.8	13.0	7.8	7.8	10.4	1.5	4.3	10.6	9.1	14.1	8.6	8.6	11.4
		2.5	10.5	12.0	9.6	9.6	9.2	8.5	7.4	2.5	10.5	13.1	10.0	10.5	10.0	8.8	8.0
		3.5	19.0	13.1	10.0	7.5	10.0	8.8	5.7	3.5	19.0	14.2	10.5	8.1	10.9	9.2	6.2
6CW-HW	600	3.0	5.0	17.3	13.1	11.5	13.2	11.5	8.8	3.5	6.7	20.0	14.1	11.4	15.3	12.3	8.7
		4.0	8.6	19.2	13.8	9.6	14.7	12.1	7.3	4.5	10.7	21.7	14.8	9.6	16.6	12.8	7.4
		5.0	13.0	20.4	14.3	8.2	15.6	12.5	6.2	5.5	15.5	22.8	15.2	8.3	17.4	13.2	6.3
8CW-HW	800	6.5	11.4	23.2	17.1	7.1	17.7	15.0	5.4	6.0	9.8	24.6	17.6	8.2	18.8	15.4	6.3
		7.5	14.8	24.2	17.4	6.5	18.5	15.3	4.9	7.0	13.1	25.8	18.1	7.4	19.7	15.8	5.6
		8.5	18.7	25.0	17.7	5.9	19.1	15.5	4.5	8.0	16.7	26.8	18.4	6.7	20.5	16.1	5.1
10CW-HW	1000	6.5	5.7	29.0	21.6	8.9	22.2	19.0	6.8	6.0	4.6	30.7	22.2	10.2	23.5	19.4	7.8
		8.0	8.2	31.0	22.3	7.8	23.7	19.5	5.9	8.0	8.2	33.8	23.4	8.5	25.8	20.4	6.5
		9.5	11.0	32.5	22.9	6.8	24.8	20.0	5.2	10.0	12.1	35.8	24.1	7.2	27.3	20.9	5.5
12CW-HW	1200	6.0	6.3	33.0	26.1	11.0	25.2	23.1	8.4	5.5	5.4	34.7	26.7	12.6	26.5	23.5	9.6
		7.5	9.5	36.1	27.3	9.6	27.6	24.0	7.4	7.0	8.4	38.3	28.1	10.9	29.3	24.6	8.4
		9.0	13.2	38.5	28.1	8.5	29.4	24.7	6.5	8.5	11.9	41.1	29.2	9.7	31.4	25.5	7.4

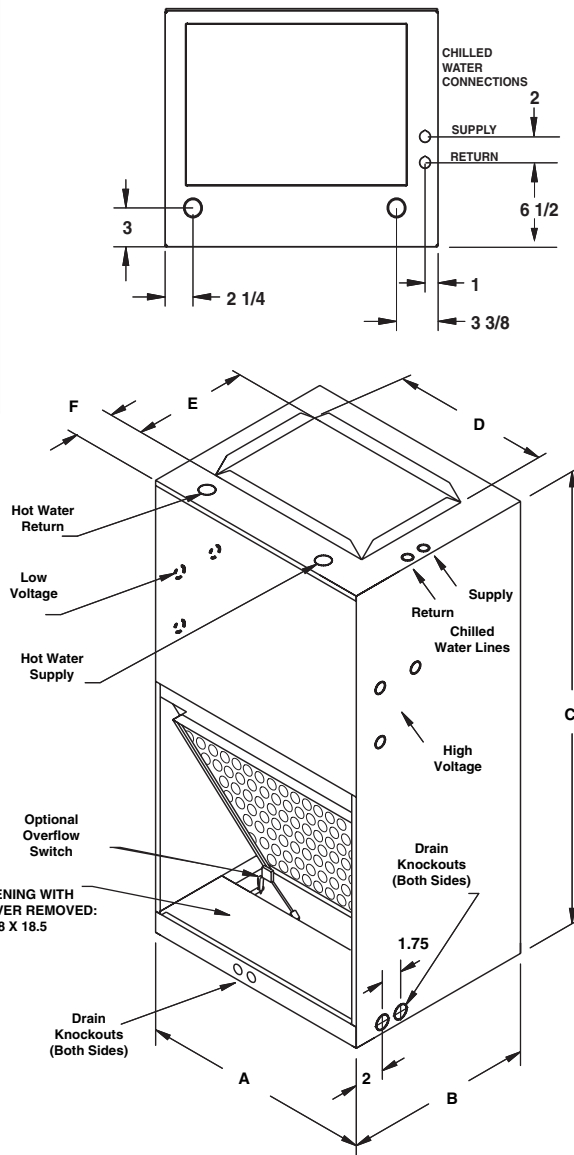
HEATING CAPACITY															
UNIT MODEL	NOMINAL CFM	GPM	P.D. (Ft. Wtr.)	HEATING DATA (70° ENTERING AIR)											
				BTUH @ 180 F		LVG AIR F		BTUH @ 160 F		LVG AIR F		BTUH @ 140 F		LVG AIR F	
				BTUH	LVG	BTUH	LVG	BTUH	LVG	BTUH	LVG	BTUH	LVG		
4CW-HW	400	2.0	1.3	30.0	139	24.6	127	19.1	114	13.6	102				
		4.0	4.5	33.3	147	27.3	133	21.2	119	15.1	105				
		6.0	9.6	34.9	151	28.5	136	22.2	121	15.9	107				
6CW-HW	600	2.0	1.3	38.5	129	31.5	119	24.5	108	17.5	97				
		4.0	4.5	43.4	137	35.5	125	27.6	113	19.7	100				
		6.0	9.6	45.7	141	37.4	128	29.1	115	20.8	102				
8CW-HW	800	4.0	4.5	52.0	130	42.6	119	33.1	108	23.6	97				
		5.5	8.0	54.5	133	44.6	122	34.7	110	24.8	99				
		7.0	12.5	55.9	135	45.8	123	35.6	111	25.4	99				
10CW-HW	1000	4.0	4.5	59.4	125	48.6	115	37.8	105	27.0	95				
		5.5	8.0	62.5	128	51.2	117	39.8	107	28.4	96				
		7.0	12.5	64.3	130	52.6	119	40.9	108	29.2	97				
12CW-HW	1200	4.0	4.5	70.2	124	57.4	114	44.6	104	31.9	95				
		5.5	8.2	73.7	127	60.3	116	46.9	106	33.5	96				
		7.0	12.9	75.8	128	62.0	117	48.2	107	34.4	97				

BLOWER DATA - PSC											
UNIT MODEL	MOTOR H.P. (120V)	AMPS	MOTOR SPEED	CFM VS. EXTERNAL STATIC PRESSURE							
				0.05	0.10	0.15	0.20	0.25	0.30	0.35	0.40
4CW-HW	1/15	0.8	HIGH	485	470	455	440	410	380	350	---
			MEDIUM	395	380	365	350	325	300	275	---
			LOW	300	280	265	250	230	210	190	---
6CW-HW	1/4	2.9	HIGH	730	710	685	660	640	620	595	---
			MEDIUM	600	580	565	550	530	510	490	---
			LOW	465	450	435	420	405	390	375	---
8CW-HW	1/3	5.8	HIGH	890	870	845	820	800	780	760	740
			MED. LOW	715	700	685	670	655	640	625	610
			LOW	575	560	550	540	525	510	500	490
10CW-HW	1/2	8.0	HIGH	1085	1060	1070	1020	995	970	950	930
			MED. LOW	910	890	870	850	835	820	800	780
			LOW	745	730	715	700	690	680	665	650
12CW-HW	1/2	7.0	HIGH	1190	1170	1150	1130	1105	1080	1055	1030
			MED. LOW	955	940	930	920	905	890	875	860
			LOW	765	760	750	740	735	730	720	710

PHYSICAL DIMENSIONS								
UNIT MODEL	A	B	C	D	E	F	FILTER SIZE	CW AND HW COIL CONNECTIONS
4 - 8CW-HW	22-1/8	18-1/8	43	18	12-1/2	4-3/4	18 X 18	5/8 O.D.
10CW-HW	22-1/8	18-1/8	43	18	12-1/2	4-3/4	18 X 20	5/8 O.D.
12CW-HW	22-1/8	21-1/8	43	18	15-1/2	4-3/4	18 X 20	5/8 O.D.

### NOTES:

- Coil connections are sweat and stub out top of unit



# CWE Series

## Wall / Closet Fan Coils

# CWE Series

## Upflow Wall / Closet Fan Coils

### 2-Pipe with Electric Heat

### Chilled Water Cooling (195 - 1160 CFM)

### Electric Heat (Up to 10 kW)

COOLING CAPACITY																	
UNIT MODEL	NOMINAL CFM	45 DEGREE ENTERING WATER									42 DEGREE ENTERING WATER						
		GPM	P.D. (Ft. Wtr.)	80F D.B. / 67F W.B.			75F D.B. / 63F W.B.			GPM	GPM (Ft. Wtr.)	80F D.B. / 67F W.B.			75F D.B. / 63F W.B.		
				TH	SH	TR	TH	SH	TR			TH	SH	TR	TH	SH	TR
4CWE	400	1.5	4.3	9.7	8.8	13.0	7.8	7.8	10.4	1.5	4.3	10.6	9.1	14.1	8.6	8.6	11.4
		2.5	10.5	12.0	9.6	9.6	9.2	8.5	7.4	2.5	10.5	13.1	10.0	10.5	10.0	8.8	8.0
		3.5	19.0	13.1	10.0	7.5	10.0	8.8	5.7	3.5	19.0	14.2	10.5	8.1	10.9	9.2	6.2
6CWE	600	3.0	5.0	17.3	13.1	11.5	13.2	11.5	8.8	3.5	6.7	20.0	14.1	11.4	15.3	12.3	8.7
		4.0	8.6	19.2	13.8	9.6	14.7	12.1	7.3	4.5	10.7	21.7	14.8	9.6	16.6	12.8	7.4
		5.0	13.0	20.4	14.3	8.2	15.6	12.5	6.2	5.5	15.5	22.8	15.2	8.3	17.4	13.2	6.3
8CWE	800	6.5	11.4	23.2	17.1	7.1	17.7	15.0	5.4	6.0	9.8	24.6	17.6	8.2	18.8	15.4	6.3
		7.5	14.8	24.2	17.4	6.5	18.5	15.3	4.9	7.0	13.1	25.8	18.1	7.4	19.7	15.8	5.6
		8.5	18.7	25.0	17.7	5.9	19.1	15.5	4.5	8.0	16.7	26.8	18.4	6.7	20.5	16.1	5.1
10CWE	1000	6.5	5.7	29.0	21.6	8.9	22.2	19.0	6.8	6.0	4.6	30.7	22.2	10.2	23.5	19.4	7.8
		8.0	8.2	31.0	22.3	7.8	23.7	19.5	5.9	8.0	8.2	33.8	23.4	8.5	25.8	20.4	6.5
		9.5	11.0	32.5	22.9	6.8	24.8	20.0	5.2	10.0	12.1	35.8	24.1	7.2	27.3	20.9	5.5
12CWE	1200	6.0	6.3	33.0	26.1	11.0	25.2	23.1	8.4	5.5	5.4	34.7	26.7	12.6	26.5	23.5	9.6
		7.5	9.5	36.1	27.3	9.6	27.6	24.0	7.4	7.0	8.4	38.3	28.1	10.9	29.3	24.6	8.4
		9.0	13.2	38.5	28.1	8.5	29.4	24.7	6.5	8.5	11.9	41.1	29.2	9.7	31.4	25.5	7.4

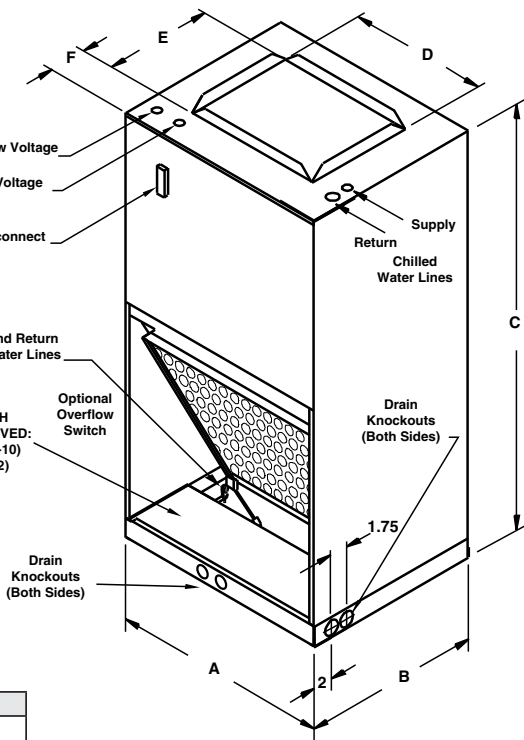
BLOWER DATA- PSC											
UNIT MODEL	MOTOR H.P. (240V)	MOTOR SPEED	CFM VS. EXTERNAL STATIC PRESSURE								
			0.05	0.10	0.15	0.20	0.25	0.30	0.35		
4CWE	1/6	MED. HIGH	520	500	480	460	430	410	390	---	
		MED. LOW	390	370	355	340	325	310	290	---	
		LOW	310	290	270	250	235	220	195	---	
6CWE	1/6	HIGH	610	600	590	580	570	560	545	---	
		MED.HIGH	470	460	450	440	430	420	405	---	
		MED. LOW	355	340	325	310	300	290	280	---	
8CWE	1/6	HIGH	860	840	820	800	780	760	740	720	
		MEDIUM	715	700	685	670	655	640	620	600	
		LOW	590	580	565	550	540	530	515	500	
10CWE	1/4	HIGH	1120	1100	1075	1050	1025	1000	970	940	
		MEDIUM	910	900	880	860	845	830	810	790	
		LOW	730	720	710	700	690	680	665	650	
12CWE	1/4	HIGH	-	1160	1130	1100	1070	1040	1010	980	
		MED-HIGH	-	1050	1030	1010	985	960	930	900	
		MED-LOW	-	970	950	930	910	890	870	850	

PHYSICAL DIMENSIONS								
UNIT MODEL	A	B	C	D	E	F	FILTER SIZE	CHILLED WATER COIL CONNECTIONS
4 - 10CWE	22-1/8	15-1/8	40	14	10-1/2	3-5/8	18 X 18	5/8 O.D.
12CWE	22-1/8	18-1/8	43	14	13	3-5/8	18 X 20	5/8 O.D.

**NOTES:**

1. Coil connections are sweat and stub out top of unit

ELECTRICAL DATA																
UNIT MODEL	ELECTRIC HEAT CAPACITY						TOTAL AMPS			MIN. CIR. AMPACITY			MAX. OVERCURRENT PROTECTION			
	KW			BTUH			240V	208V	277V	240V	208V	277V	240V	208V	277V	
	240V	208V	277V	240V	208V	277V										
4CWE	0	0	0	0	0	0	1.1	---	1.2	---	---	---	---	---	---	
	1	1	0.8	1	3400	2600	5.3	4.7	4.8	7	6	6	15	15	15	
	2	2	1.5	2	6800	5100	9.4	8.3	8.4	12	11	11	15	15	15	
	3	3	2.3	3	10200	7700	13.6	11.9	12.0	17	15	15	20	15	15	
6CWE	0	0	0	0	0	0	1.1	---	1.2	---	---	---	---	---	---	
	1	1	0.8	1	3400	2600	5.3	4.7	4.8	7	6	6	15	15	15	
	2	2	1.5	2	6800	5100	9.4	8.3	8.4	12	11	11	15	15	15	
	3	3	2.3	3	10200	7700	13.6	11.9	12.0	17	15	15	20	15	15	
8CWE	0	0	0	0	0	0	1.7	---	1.2	---	---	---	---	---	---	
	1	1	0.8	1	3400	2600	5.3	4.7	4.8	7	6	6	15	15	15	
	2	2	1.5	2	6800	5100	9.4	8.3	8.4	12	11	11	15	15	15	
	3	3	2.3	3	10200	7700	13.6	11.9	12.0	17	15	15	20	15	15	
10CWE	0	0	0	0	0	0	2.7	---	1.6	---	---	---	---	---	---	
	1	1	0.8	1	3400	2600	5.3	4.7	4.8	7	6	6	15	15	15	
	2	2	1.5	2	6800	5100	9.4	8.3	8.4	12	11	11	15	15	15	
	3	3	2.3	3	10200	7700	13.6	11.9	12.0	17	15	15	20	15	15	
12CWE	0	0	0	0	0	0	2.5	---	---	---	---	---	---	---	---	
	1	1	0.8	1	3400	2600	5.3	4.7	4.8	7	6	6	15	15	15	
	2	2	1.5	2	6800	5100	9.4	8.3	8.4	12	11	11	15	15	15	
	3	3	2.3	3	10200	7700	13.6	11.9	12.0	17	15	15	20	15	15	



In keeping with its policy of continuous progress and product improvement, First Operations reserves the right to make changes without notice. Maintenance for all First Co. products is available under "Product Maintenance" at [www.firstco.com](http://www.firstco.com).



# CWX Series

## Wall / Closet Fan Coils

# CWX Series

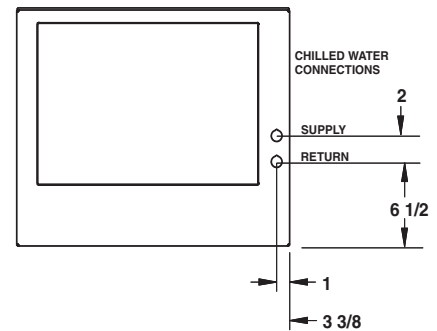
## Upflow Wall / Closet Fan Coils

### 2-Pipe Chilled Water - Hot Water

(240 - 1160 CFM)

COOLING CAPACITY																	
UNIT MODEL	NOMINAL CFM	45 DEGREE ENTERING WATER									42 DEGREE ENTERING WATER						
		GPM	P.D. (Ft. Wtr.)	80F D.B. / 67F W.B.			75F D.B. / 63F W.B.			GPM	GPM (Ft. Wtr.)	80F D.B. / 67F W.B.			75F D.B. / 63F W.B.		
				TH	SH	TR	TH	SH	TR			TH	SH	TR	TH	SH	TR
4CWX	400	1.5	4.3	9.7	8.8	13.0	7.8	7.8	10.4	1.5	4.3	10.6	9.1	14.1	8.6	8.6	11.4
		2.5	10.5	12.0	9.6	9.6	9.2	8.5	7.4	2.5	10.5	13.1	10.0	10.5	10.0	8.8	8.0
		3.5	19.0	13.1	10.0	7.5	10.0	8.8	5.7	3.5	19.0	14.2	10.5	8.1	10.9	9.2	6.2
6CWX	600	3.0	5.0	17.3	13.1	11.5	13.2	11.5	8.8	3.5	6.7	20.0	14.1	11.4	15.3	12.3	8.7
		4.0	8.6	19.2	13.8	9.6	14.7	12.1	7.3	4.5	10.7	21.7	14.8	9.6	16.6	12.8	7.4
		5.0	13.0	20.4	14.3	8.2	15.6	12.5	6.2	5.5	15.5	22.8	15.2	8.3	17.4	13.2	6.3
8CWX	800	6.5	11.4	23.2	17.1	7.1	17.7	15.0	5.4	6.0	9.8	24.6	17.6	8.2	18.8	15.4	6.3
		7.5	14.8	24.2	17.4	6.5	18.5	15.3	4.9	7.0	13.1	25.8	18.1	7.4	19.7	15.8	5.6
		8.5	18.7	25.0	17.7	5.9	19.1	15.5	4.5	8.0	16.7	26.8	18.4	6.7	20.5	16.1	5.1
10CWX	1000	6.5	5.7	29.0	21.6	8.9	22.2	19.0	6.8	6.0	4.6	30.7	22.2	10.2	23.5	19.4	7.8
		8.0	8.2	31.0	22.3	7.8	23.7	19.5	5.9	8.0	8.2	33.8	23.4	8.5	25.8	20.4	6.5
		9.5	11.0	32.5	22.9	6.8	24.8	20.0	5.2	10.0	12.1	35.8	24.1	7.2	27.3	20.9	5.5
12CWX	1200	6.0	6.3	33.0	26.1	11.0	25.2	23.2	8.4	5.5	5.4	34.7	26.7	12.6	26.5	23.5	9.6
		7.5	9.5	36.1	27.3	9.6	27.6	24.0	7.4	7.0	8.4	38.3	28.1	10.9	29.3	24.6	8.4
		9.0	13.2	38.5	28.1	8.5	29.4	24.7	6.5	8.5	11.9	41.1	29.2	9.7	31.4	25.5	7.4

HEATING CAPACITY												
UNIT MODEL	NOMINAL CFM	GPM	P.D. (Ft. Wtr.)	HEATING DATA (70° ENTERING AIR)								
				BTUH @ 180 F	LVG AIR @ 180 F	BTUH @ 160 F	LVG AIR @ 160 F	BTUH @ 140 F	LVG AIR @ 140 F	BTUH @ 120 F	LVG AIR @ 120 F	
				4CWX	400	1.0	2.1	26.0	130	21.3	119	16.6
30.2	140	24.7	127					19.2	114	13.7	102	
31.8	144	26.1	130					20.3	117	14.5	104	
6CWX	600	1.0	0.7	35.7	125	29.2	115	22.7	105	16.2	95	
				44.7	139	36.5	126	28.4	114	20.3	101	
				48.4	145	39.6	131	30.8	118	22.0	104	
8CWX	800	3.5	3.6	56.8	136	46.5	124	36.1	112	25.8	100	
				60.2	140	49.3	127	38.3	114	27.4	102	
				62.6	142	51.2	129	39.8	116	28.5	103	
10CWX	1000	4.0	2.4	73.0	138	59.7	125	46.4	113	33.2	101	
				78.2	142	64.0	129	49.8	116	35.6	103	
				81.5	145	66.7	132	51.9	118	37.1	104	
12CWX	1200	3.0	1.8	81.5	133	66.7	121	51.9	110	37.0	99	
				92.8	142	75.9	129	59.1	116	42.2	103	
				97.1	145	79.4	131	61.8	118	44.1	104	

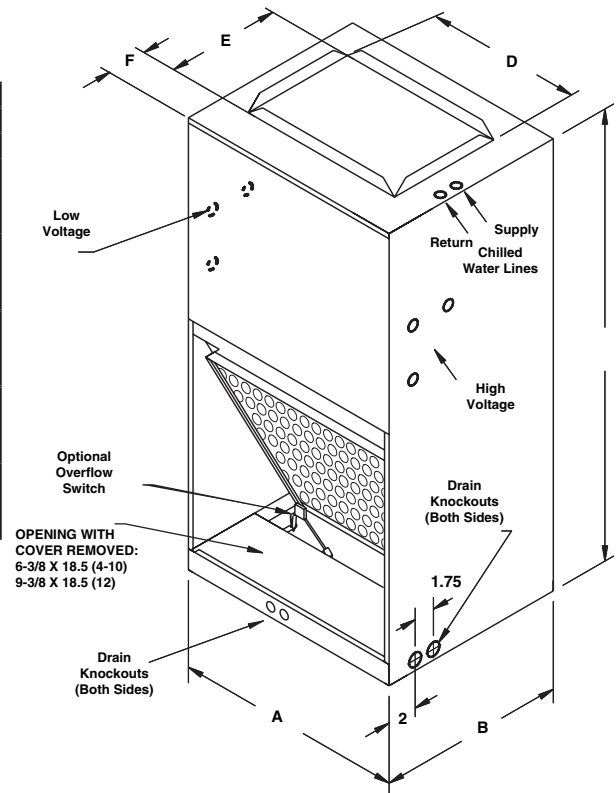


**NOTES:**

1. Above capacities are at nominal CFM conditions. Maximum discharge air temperature must not exceed 145° at actual CFM.

BLOWER DATA - ECM												
UNIT MODEL	MOTOR HP	AMPS	SPEED TAPS	CFM vs EXTERNAL STATIC PRESSURE								
				0.05	0.10	0.15	0.20	0.25	0.30	0.35	0.45	
4CWX	1/3	4.8	4	575	560	545	530	515	500	485	470	
			3	515	500	485	470	450	430	420	410	
			2	425	410	395	380	360	340	320	300	
			1	350	330	310	290	265	240	225	210	
6CWX	1/3	4.8	4	710	700	690	680	665	650	635	620	
			3	665	650	635	620	605	590	575	560	
			2	540	520	500	480	465	450	435	420	
			1	375	360	345	330	315	300	275	250	
8CWX	1/3	4.8	4	980	960	940	920	905	890	865	840	
			3	860	850	835	820	810	800	785	770	
			2	710	700	690	680	665	650	635	620	
			1	580	570	550	530	515	500	485	470	
10CWX	1/2	6.8	4	1200	1180	1155	1130	1105	1080	1060	1040	
			3	1060	1050	1040	1030	1020	1010	1000	990	
			2	920	910	900	890	870	850	840	830	
			1	770	760	750	740	720	700	690	680	
12CWX	1/2	6.8	4	1345	1330	1315	1300	1275	1250	1225	1200	
			3	1275	1260	1245	1230	1215	1200	1185	1170	
			2	1125	1110	1090	1070	1060	1050	1035	1020	
			1	975	960	945	930	915	900	880	860	

PHYSICAL DIMENSIONS								
UNIT MODEL	A	B	C	D	E	F	FILTER SIZE	CHILLED WATER COIL CONNECTIONS
4 - 10CWX	22-1/8	15-1/8	40	13	10-1/2	3-5/8	18 X 18	5/8 O.D.
12CWX	22-1/8	18-1/8	43	14	13	3-5/8	18 X 24	5/8 O.D.



**NOTES:**

1. Coil connections are sweat and stub out top of unit

# CWX-HW Series

## Wall / Closet Fan Coils

# CWX-HW Series

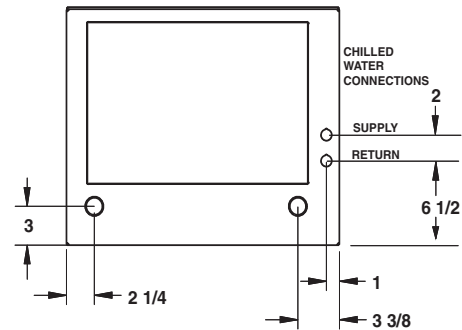
## Upflow Wall / Closet Fan Coils

### 4-Pipe Chilled Water - Hot Water

(190 - 1190 CFM)

COOLING CAPACITY																	
UNIT MODEL	NOMINAL CFM	45 DEGREE ENTERING WATER									42 DEGREE ENTERING WATER						
		GPM	P.D. (Ft. Wtr.)	80F D.B. / 67F W.B.			75F D.B. / 63F W.B.			GPM	P.D. (Ft. Wtr.)	80F D.B. / 67F W.B.			75F D.B. / 63F W.B.		
				TH	SH	TR	TH	SH	TR			TH	SH	TR	TH	SH	TR
4CWX-HW	400	1.5	4.3	9.7	8.8	13.0	7.8	7.8	10.4	1.5	4.3	10.6	9.1	14.1	8.6	8.6	11.4
		2.5	10.5	12.0	9.6	9.6	9.2	8.5	7.4	2.5	10.5	13.1	10.0	10.5	10.0	8.8	8.0
		3.5	19.0	13.1	10.0	7.5	10.0	8.8	5.7	3.5	19.0	14.2	10.5	8.1	10.9	9.2	6.2
6CWX-HW	600	3.0	5.0	17.3	13.1	11.5	13.2	11.5	8.8	3.5	6.7	20.0	14.1	11.4	15.3	12.3	8.7
		4.0	8.6	19.2	13.8	9.6	14.7	12.1	7.3	4.5	10.7	21.7	14.8	9.6	16.6	12.8	7.4
		5.0	13.0	20.4	14.3	8.2	15.6	12.5	6.2	5.5	15.5	22.8	15.2	8.3	17.4	13.2	6.3
8CWX-HW	800	6.5	11.4	23.2	17.1	7.1	17.7	15.0	5.4	6.0	9.8	24.6	17.6	8.2	18.8	15.4	6.3
		7.5	14.8	24.2	17.4	6.5	18.5	15.3	4.9	7.0	13.1	25.8	18.1	7.4	19.7	15.8	5.6
		8.5	18.7	25.0	17.7	5.9	19.1	15.5	4.5	8.0	16.7	26.8	18.4	6.7	20.5	16.1	5.1
10CWX-HW	1000	6.5	5.7	29.0	21.6	8.9	22.2	19.0	6.8	6.0	4.6	30.7	22.2	10.2	23.5	19.4	7.8
		8.0	8.2	31.0	22.3	7.8	23.7	19.5	5.9	8.0	8.2	33.8	23.4	8.5	25.8	20.4	6.5
		9.5	11.0	32.5	22.9	6.8	24.8	20.0	5.2	10.0	12.1	35.8	24.1	7.2	27.3	20.9	5.5
12CWX-HW	1200	6.0	6.3	33.0	26.1	11.0	25.2	23.1	8.4	5.5	5.4	34.7	26.7	12.6	26.5	23.5	9.6
		7.5	9.5	36.1	27.3	9.6	27.6	24.0	7.4	7.0	8.4	38.3	28.1	10.9	29.3	24.6	8.4
		9.0	13.2	38.5	28.1	8.5	29.4	24.7	6.5	8.5	11.9	41.1	29.2	9.7	31.4	25.5	7.4

HEATING CAPACITY												
UNIT MODEL	NOMINAL CFM	GPM	P.D. (Ft. Wtr.)	HEATING DATA (70° ENTERING AIR)								
				BTUH @ 180 F		LVG AIR @ 160 F		BTUH @ 140 F		LVG AIR @ 120 F		
				F	F	F	F	F	F	F	F	
4CWX-HW	400	2.0	1.3	30.0	139	24.6	127	19.1	114	13.6	102	
		4.0	4.5	33.3	147	27.3	133	21.2	119	15.1	105	
		6.0	9.6	34.9	151	28.5	136	22.2	121	15.9	107	
6CWX-HW	600	2.0	1.3	38.5	129	31.5	119	24.5	108	17.5	97	
		4.0	4.5	43.4	137	35.5	125	27.6	113	19.7	100	
		6.0	9.6	45.7	141	37.4	128	29.1	115	20.8	102	
8CWX-HW	800	4.0	4.5	52.0	130	42.6	119	33.1	108	23.6	97	
		5.5	8.0	54.5	133	44.6	122	34.7	110	24.8	99	
		7.0	12.5	55.9	135	45.8	123	35.6	111	25.4	99	
10CWX-HW	1000	4.0	4.5	59.4	125	48.6	115	37.8	105	27.0	95	
		5.5	8.0	62.5	128	51.2	117	39.8	107	28.4	96	
		7.0	12.5	64.3	130	52.6	119	40.9	108	29.2	97	
12CWX-HW	1200	4.0	4.5	70.2	124	57.4	114	44.6	104	31.9	95	
		5.5	8.2	73.7	127	60.3	116	46.9	106	33.5	96	
		7.0	12.9	75.8	128	62.0	117	48.2	107	34.4	97	

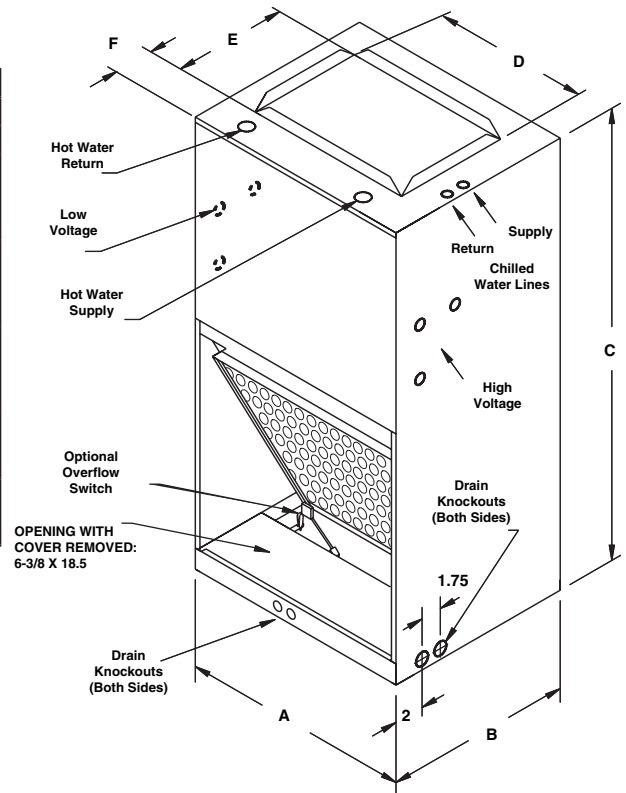


BLOWER DATA - ECM											
UNIT MODEL	MOTOR HP	AMPS	SPEED TAP	CFM vs EXTERNAL STATIC PRESSURE							
				0.05	0.10	0.15	0.20	0.25	0.30	0.35	0.40
4CWX-HW	1/3	4.8	4	660	640	615	590	560	530	500	470
			3	500	490	480	470	450	430	415	400
			2	415	400	385	370	350	330	310	290
			1	340	330	310	290	275	260	235	210
6CWX-HW	1/3	4.8	4	730	720	710	700	685	670	655	640
			3	660	650	640	630	615	600	585	570
			2	540	520	500	480	470	460	440	420
			1	400	380	360	340	320	300	280	260
8CWX-HW	1/2	6.8	4	990	980	960	940	920	900	875	850
			3	860	850	835	820	810	800	785	770
			2	710	700	690	680	665	650	635	620
			1	560	550	540	530	515	500	485	470
10CWX-HW	1/2	6.8	3	1100	1080	1060	1040	1020	1000	975	950
			2	900	890	880	870	860	850	835	820
			1	770	760	740	720	710	700	690	680
			12CWX-HW	3/4	8.4	3	1280	1260	1240	1220	1195
2	1115	1100				1085	1070	1060	1050	1035	1020
1	960	950				940	930	915	900	890	880

PHYSICAL DIMENSIONS								
UNIT MODEL	A	B	C	D	E	F	FILTER SIZE	CW AND HW COIL CONNECTIONS
4 - 8CWX-HW	22-1/8	18-1/8	43	18	12-1/2	4-3/4	18 X 18	5/8 O.D.
10CWX-HW	22-1/8	18-1/8	43	18	12-1/2	4-3/4	18 X 20	5/8 O.D.
12CWX-HW	22-1/8	21-1/8	43	18	15-1/2	4-3/4	18 X 20	5/8 O.D.

### NOTES:

- Coil connections are sweat and stub out top of unit



# CWEX Series

## Wall / Closet Fan Coils

# CWEX Series

## Upflow Wall / Closet Fan Coils

### 2-Pipe with Electric Heat

### Chilled Water Cooling (195 - 1160 CFM)

### Electric Heat (Up to 10 kW)

COOLING CAPACITY																	
UNIT MODEL	NOMINAL CFM	45 DEGREE ENTERING WATER									42 DEGREE ENTERING WATER						
		GPM	P.D. (Ft. Wtr.)	80F D.B. / 67F W.B.			75F D.B. / 63F W.B.			GPM	GPM (Ft. Wtr.)	80F D.B. / 67F W.B.			75F D.B. / 63F W.B.		
				TH	SH	TR	TH	SH	TR			TH	SH	TR	TH	SH	TR
4CWEX	400	1.5	4.3	9.7	8.8	13.0	7.8	7.8	10.4	1.5	4.3	10.6	9.1	14.1	8.6	8.6	11.4
		2.5	10.5	12.0	9.6	9.6	9.2	8.5	7.4	2.5	10.5	13.1	10.0	10.5	10.0	8.8	8.0
		3.5	19.0	13.1	10.0	7.5	10.0	8.8	5.7	3.5	19.0	14.2	10.5	8.1	10.9	9.2	6.2
6CWEX	600	3.0	5.0	17.3	13.1	11.5	13.2	11.5	8.8	3.5	6.7	20.0	14.1	11.4	15.3	12.3	8.7
		4.0	8.6	19.2	13.8	9.6	14.7	12.1	7.3	4.5	10.7	21.7	14.8	9.6	16.6	12.8	7.4
		5.0	13.0	20.4	14.3	8.2	15.6	12.5	6.2	5.5	15.5	22.8	15.2	8.3	17.4	13.2	6.3
8CWEX	800	6.5	11.4	23.2	17.1	7.1	17.7	15.0	5.4	6.0	9.8	24.6	17.6	8.2	18.8	15.4	6.3
		7.5	14.8	24.2	17.4	6.5	18.5	15.3	4.9	7.0	13.1	25.8	18.1	7.4	19.7	15.8	5.6
		8.5	18.7	25.0	17.7	5.9	19.1	15.5	4.5	8.0	16.7	26.8	18.4	6.7	20.5	16.1	5.1
10CWEX	1000	6.5	5.7	29.0	21.6	8.9	22.2	19.0	6.8	6.0	4.6	30.7	22.2	10.2	23.5	19.4	7.8
		8.0	8.2	31.0	22.3	7.8	23.7	19.5	5.9	8.0	8.2	33.8	23.4	8.5	25.8	20.4	6.5
		9.5	11.0	32.5	22.9	6.8	24.8	20.0	5.2	10.0	12.1	35.8	24.1	7.2	27.3	20.9	5.5
12CWEX	1200	6.0	6.3	33.0	26.1	11.0	25.2	23.1	8.4	5.5	5.4	34.7	26.7	12.6	26.5	23.5	9.6
		7.5	9.5	36.1	27.3	9.6	27.6	24.0	7.4	7.0	8.4	38.3	28.1	10.9	29.3	24.6	8.4
		9.0	13.2	38.5	28.1	8.5	29.4	24.7	6.5	8.5	11.9	41.1	29.2	9.7	31.4	25.5	7.4

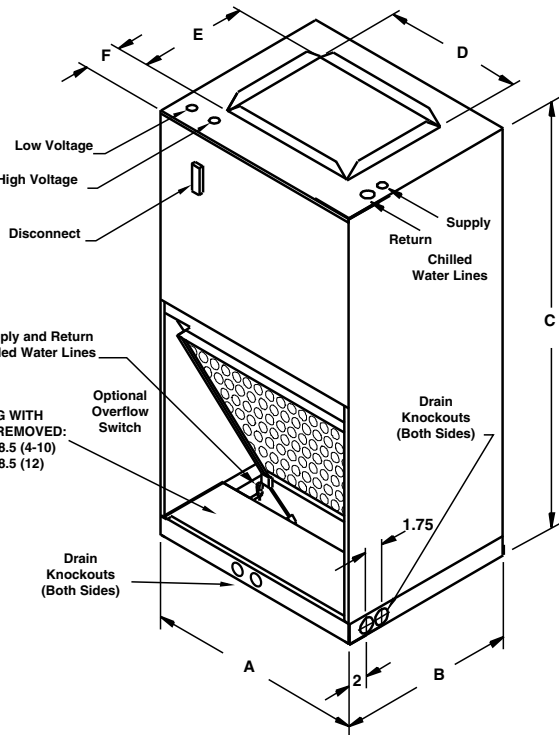
BLOWER DATA - ECM										
UNIT MODEL	MOTOR H.P. (240V)	SPEED TAPS	CFM VS. EXTERNAL STATIC PRESSURE							
			0.05	0.10	0.15	0.20	0.25	0.30	0.35	0.40
4CWEX	1/3	4	615	600	580	560	545	500	470	
		3	515	500	485	470	450	430	415	400
		2	405	390	375	360	345	310	290	
6CWEX	1/3	4	755	740	725	710	695	680	660	640
		3	675	660	645	630	615	600	590	580
		2	520	500	480	460	450	440	425	410
8CWEX	1/3	3	900	880	860	840	820	800	775	750
		2	705	690	680	670	655	640	625	610
		1	575	560	545	530	515	500	480	460
10CWEX	1/2	3	1050	1030	1010	990	970	950	925	900
		2	900	890	880	870	855	840	830	820
		1	750	740	730	720	710	700	680	660
12CWEX	1/2	3	1280	1260	1240	1220	1200	1180	1150	1120
		2	1115	1100	1085	1070	1055	1040	1030	1020
		1	960	950	940	930	915	900	885	870

PHYSICAL DIMENSIONS								
UNIT MODEL	A	B	C	D	E	F	FILTER SIZE	CHILLED WATER COIL CONNECTIONS
4 - 10CWEX	22-1/8"	15-1/8"	40"	14"	10-1/2"	3-5/8"	18 X 18	5/8 O.D.
12CWEX	22-1/8"	18-1/8"	43"	14"	13"	3-5/8"	18 X 20	5/8 O.D.

#### NOTES:

1. Coil connections are sweat and stub out top of unit

ELECTRICAL DATA										
UNIT MODEL	ELECTRIC HEAT CAPACITY				TOTAL AMPS		MIN. CIR. CAPACITY		MAX. OVERCURRENT PROTECTION	
	KW		BTUH							
	240V	208V	240V	208V	240V	208V	240V	208V	240V	208V
4CWEX	0	0	0	0	2.8	---	---	---	---	---
	1	0.8	3,400	2600	7.0	6.4	9	8	15	15
	2	1.5	6,800	5100	11.1	10.0	14	13	15	15
	3	2.3	10,200	7700	15.3	13.6	19	17	20	20
	4	3.0	13,600	10200	19.5	17.2	24	22	25	25
6CWEX	0	0	0	0	2.8	---	---	---	---	---
	2	1.5	6800	5100	11.1	10.0	14	13	15	15
	3	2.3	10200	7700	15.3	13.6	19	17	20	20
	4	3.0	13600	10200	19.5	17.2	24	22	25	25
	5	3.8	17000	12800	23.6	20.8	30	26	30	30
	6	4.5	20500	15400	27.8	24.4	35	31	35	35
8CWEX	0	0	0	0	2.8	---	---	---	---	---
	3	2.3	10200	7700	15.3	13.6	19	17	20	20
	4	3.0	13600	10200	19.5	17.2	24	22	25	25
	5	3.8	17000	12800	23.6	20.8	30	26	30	30
	6	4.5	20500	15400	27.8	24.4	35	31	35	35
10CWEX	0	0	0	0	4.1	---	---	---	---	---
	3	2.3	10200	7700	16.6	14.9	21	19	25	20
	5	3.8	17000	12800	24.9	22.1	31	28	35	30
	6	4.5	20500	15400	29.1	25.7	36	32	40	35
	8	6.0	27300	20500	37.4	32.9	47	41	50	45
12CWEX	0	0	0	0	4.1	---	---	---	---	---
	3	2.3	10200	7700	16.6	14.9	21	19	25	20
	5	3.8	17000	12800	24.9	22.1	31	28	35	30
	6	4.5	20500	15400	29.1	25.7	36	32	40	35
	8	6.0	27300	20500	37.4	32.9	47	41	50	45



In keeping with its policy of continuous progress and product improvement, First Operations reserves the right to make changes without notice. Maintenance for all First Co. products is available under "Product Maintenance" at [www.firstco.com](http://www.firstco.com).



# CW(X), CW-HW(X),CWE(X) Series Wall / Closet Fan Coils

OPTIONAL ACCESSORIES (FIELD INSTALLED)			
DESCRIPTION	PART #	DIMENSIONS	
WALL PANEL (1)	9PWUC01L (4-10)	43-3/8 X 25-5/8 (Outside Frame)	40-3/8 X 22-5/8 (Inside Frame)
	9PWUC02L (12)	46-3/8 X 25-5/8 (Outside Frame)	43-3/8 X 22-5/8 (Inside Frame)
HANGER BRKT. SET	90PK3	1-1/2 X 22-1/8	---
RETURN AIR COVER	90PK4 (4-10)	19-13/16 X 22	---
	90PK5 (12)	21-5/8 X 22	---
CONDENSATE OVERFLOW SWITCH	SS3	---	---
WALL THERMOSTAT 3-SPD., MANUAL CHANGEOVER	T420 (120/240/277)	---	---
WALL THERMOSTAT 3-SPD., AUTO CHANGEOVER	T421 (120/240/277)	---	---
24V WALL THERMOSTAT 3-SPD., MANUAL CHANGEOVER (AUTOSPEED 24V)	T200 (24V)	---	---
24V WALL THERMOSTAT 3-SPD., AUTO CHANGEOVER (AUTOSPEED 24V)	T201 (24V)	---	---



**T200/T201  
"AUTOSPEED 24V™"  
THERMOSTAT**



Optional wall panel  
(Recessed wall application)

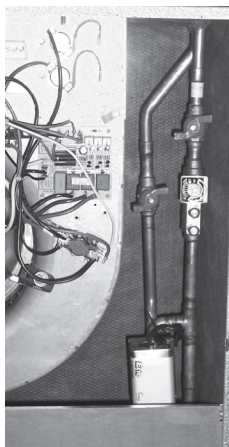


**T420/T421  
THERMOSTAT**

OPTIONAL VALVE CLUSTERS (Factory installed)	
PART #	DESCRIPTION
<b>VALVE CLUSTER:</b>	
9VCWNVM	No valves, stub kit only
9VCW2BVM	2 hand valves
9VCW22BM	2-way, valve body, 2 hand valves
9VCW23BM	3-way, valve body, 2 hand valves
<b>POWER HEAD:</b>	

## NOTES:

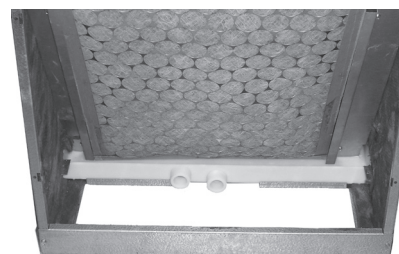
All models are available with or without factory installed valve clusters. Above are "standard" 2-way and 3-way valve clusters.. Contact the factory for other options such as circuit setters, strainers, auto-flow valves, etc.



Unit shown with  
an optional  
valve package



Unit shown with optional bottom return air kit  
(#90PK4)



Condensate drain connections  
(With drain cover removed)  
(Thermoplastic pan shown)

In keeping with its policy of continuous progress and product improvement, First Operations reserves the right to make changes without notice. Maintenance for all First Co. products is available under "Product Maintenance" at [www.firstco.com](http://www.firstco.com).

# The "Autospeed 24V™" Thermostats (Part #'s T200/T201)

**AUTOMATIC  
FAN SPEED CONTROL**

## Accurate, Efficient, and Quiet Fan Coil Operation

The new Autospeed 24V™ thermostat (part's # T200 and T201) provides 24V AC single stage temperature control of 2 pipe and 4 pipe fan coil applications. The T200/T201 thermostat offers maximum comfort and efficiency by **automatically selecting the appropriate High, Medium, or Low fan speed**, depending on room temperature and thermostat temperature setting. This automatic fan speed control not only brings the room temperature to the desired set point quickly, it maintains the room temperature with the most efficient fan speed selection. Once the desired room temperature is achieved the fan coil operates on low speed for extremely quiet operation. The fan coil control board (which is factory installed in all CW units) is a circuit board that provides control of a 3-speed line voltage fan motor. The control board allows the thermostat to control the fan motor even though, by itself, the thermostat does not have the amperage capability nor the voltage rating capability to control the fan motor.



(T200 shown with wall plate)

### T200/T201 Thermostat Features

- Compatible with 2 pipe and 4 pipe fan coils: Series HBC/PHBC/RHBC/CHBC, MB/MB-HW, HYB/PHYB, and CW/CH-HW/CWE
- Cycle fan or continuous fan operation
- **T200**-Manual Heat / Cool changeover switch
- **T201**-Automatic Heat / Cool changeover switch
- Large LED digital display
- Allows less expensive 24V control wiring from the fan coil to the thermostat, rather than larger, more expensive line voltage wiring.
- 3-speed fan operation, with speed indicator lights
- Fan speed determination:
  - If room temperature is 4 degrees (F.) off thermostat set point, fan will operate on High speed.
  - If 3 degrees off set point, fan will operate on Medium speed.
  - If within 2 degrees of set point, fan will operate on Low speed.
- One or 3 hour Auto override - Fan speed defaults to "Auto" mode after 1 hour if the user manually changes it to a particular fan speed.
- Temperature set range: 64-88 degrees F.
- Adjustable high and low temperature set points
- Selectable Fahrenheit / Centigrade display
- Power switch turns system off/on
- Requires 7-wire 24V thermostat wire
- No batteries required
- Set points are permanently retained in memory in case of power interruption
- Simple operation
- Mercury Free
- Wall plate included

DISPLAY CODES		
DISPLAY	STEADY	FLASHING
P1	Auto fan timer - 1 hour (default)	Auto fan timer - 3 hour
P2	Continuous fan (default)	Cycled fan
P3	°F (default)	°C
P4	Cycled fan standard	Cycled fan overdrive (default)
P5	Low temp limit 64 °F (default)	Low temp limit 67 °F
P6	Hi temp limit 88 °F (default)	Hi temp limit 84 °F

**AUTOMATIC  
FAN SPEED CONTROL**

# The "Autospeed 24V™" "

**Control Package:  
24V Digital 3-speed Wall Thermostat  
and Fan Coil Control Board  
For 2 pipe and 4 pipe fan coils**



## Accurate, Efficient, and Quiet Fan Coil Operation

The new Autospeed 24V™ thermostat (part #'s T200 and T201) provides 24V AC single stage temperature control of 2 pipe and 4 pipe fan coil applications. The T200/T201 thermostat offers maximum comfort and efficiency by **automatically selecting the appropriate High, Medium, or Low fan speed**, depending on room temperature and thermostat temperature setting. This automatic fan speed control not only brings the room temperature to the desired set point quickly, it maintains the room temperature with the most efficient fan speed selection. Once the desired room temperature is achieved the fan coil operates on low speed for extremely quiet operation.

The fan coil control board is a circuit board that provides control of a 3-speed line voltage (120, 208-240, or 277V), (50 or 60 cycle) fan motor. The control board allows the thermostat to control the fan motor even though, by itself, the thermostat does not have the current capability nor voltage rating capability to control the fan motor. Contact the factory for various control board part numbers.

For ceiling fan coils and vertical console units, optional controls are factory installed, which include the control board, transformer, and disconnect switch. For MB/MB-HW and CW/CW-HW/CWE series upflow or horizontal fan coils, the optional control board and transformer can be factory installed inside the unit wiring compartment. A disconnect switch is not available with the MB/MB-HW and CW/CW-HW/CWE models.



(Shown with wall plate)

### T200/T201 Thermostat Features

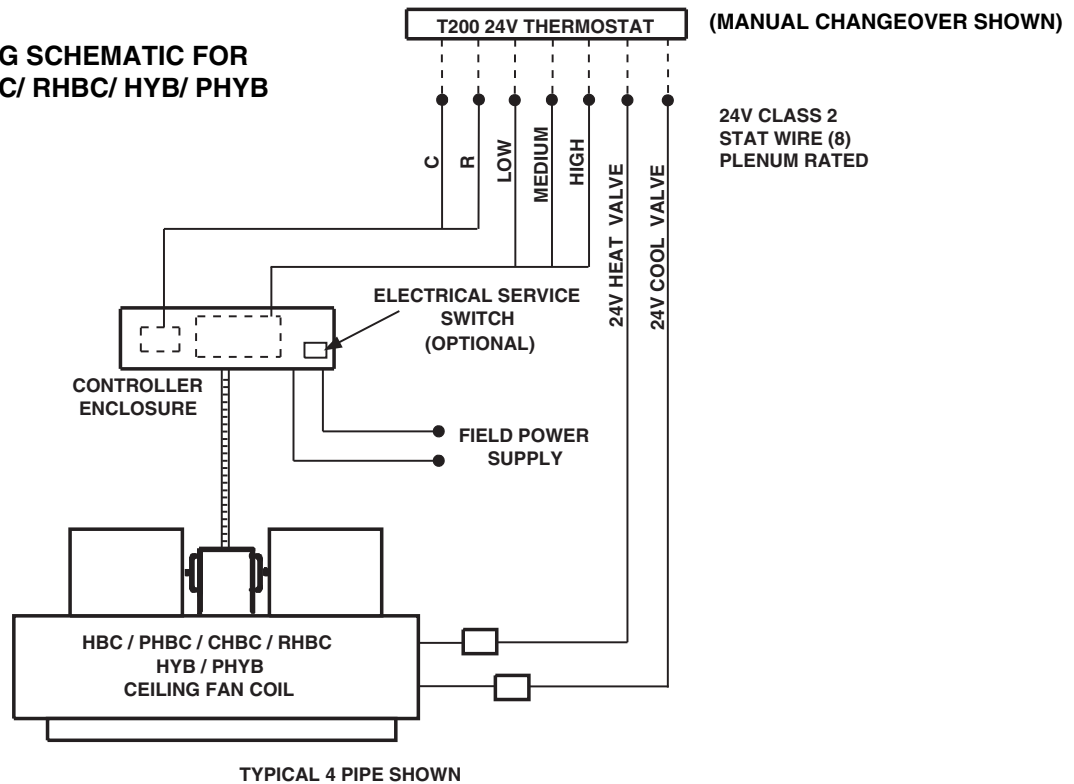
- Compatible with 2 pipe and 4 pipe fan coils Series HBC/PHBC/RHBC/CHBC, MB/MB-HW, HYB/PHYB, and CW/CW-HW/CWE
- Cycle fan or continuous fan operation
- T200-Manual Heat / Cool changeover switch
- T201-Automatic Heat / Cool changeover
- Large LED digital display
- Allows less expensive 24V control wiring from the fan coil to the thermostat, rather than larger, more expensive line voltage wiring.
- 3-speed fan operation, with speed indicator lights
- Fan speed determination:
  - If room temperature is 4 degrees (F.) off thermostat set point, fan will operate on High speed.
  - If 3 degrees off set point, fan will operate on Medium speed.
  - If within 2 degrees of set point, fan will operate on Low speed.
  - One or 3 hour Auto override - Fan speed defaults to "Auto" mode after 1 hour if the user manually changes it to a particular fan speed.
  - Temperature set range: 64-88 degrees F.

DISPLAY CODES		
DISPLAY	STEADY	FLASHING
P1	Auto fan timer - 1 hour (default)	Auto fan timer - 3 hour
P2	Continuous fan (default)	Cycled fan
P3	°F (default)	°C
P4	Cycled fan standard	Cycled fan overdrive (default)
P5	Low temp limit 64 °F (default)	Low temp limit 67 °F
P6	Hi temp limit 88 °F (default)	Hi temp limit 84 °F

# T200/T201

## Autospeed 24V Control Package

### TYPICAL WIRING SCHEMATIC FOR HBC/ PHBC/ CHBC/ RHBC/ HYB/ PHYB



### TYPICAL WIRING SCHEMATIC FOR MB / MB-HW, CW/CW-HW, VCB/ VFB/ VSB

